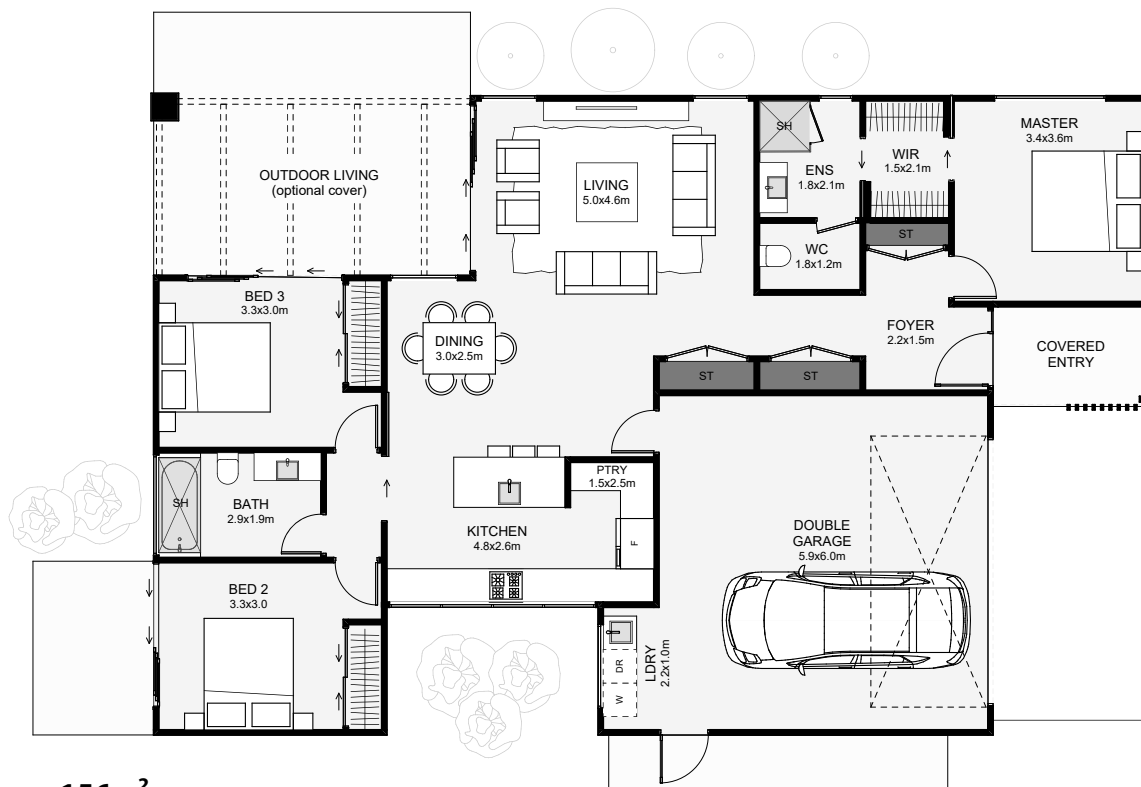








An elegant timber skeleton extrudes out from the simple, bold lines in this metal-clad home. Inside the open plan, living is offset, so the lounge is slightly privatised from the kitchen and dining. The master is positioned separately from the other rooms for increased privacy. The kitchen includes an open style pantry that's cleverly hidden. There's also the option of continuing the roof cover over the outdoor living or using a skeleton pergola to match the front. This home is a welcome architectural blend of bold and unique elements working together.



Floor Area: 156m<sup>2</sup>

 2
  3
  2
  1

17.8m 11.5m

Contact us

Ph: 0459 709 231

E: mark@aspiringhomes.com.au

www.aspiringhomes.com.au

Aspiring  
HOMES